

THE SITE

The project occupies a critical location corner of busy Skier Plaza facing Whistler and Blackcomb Mountains.

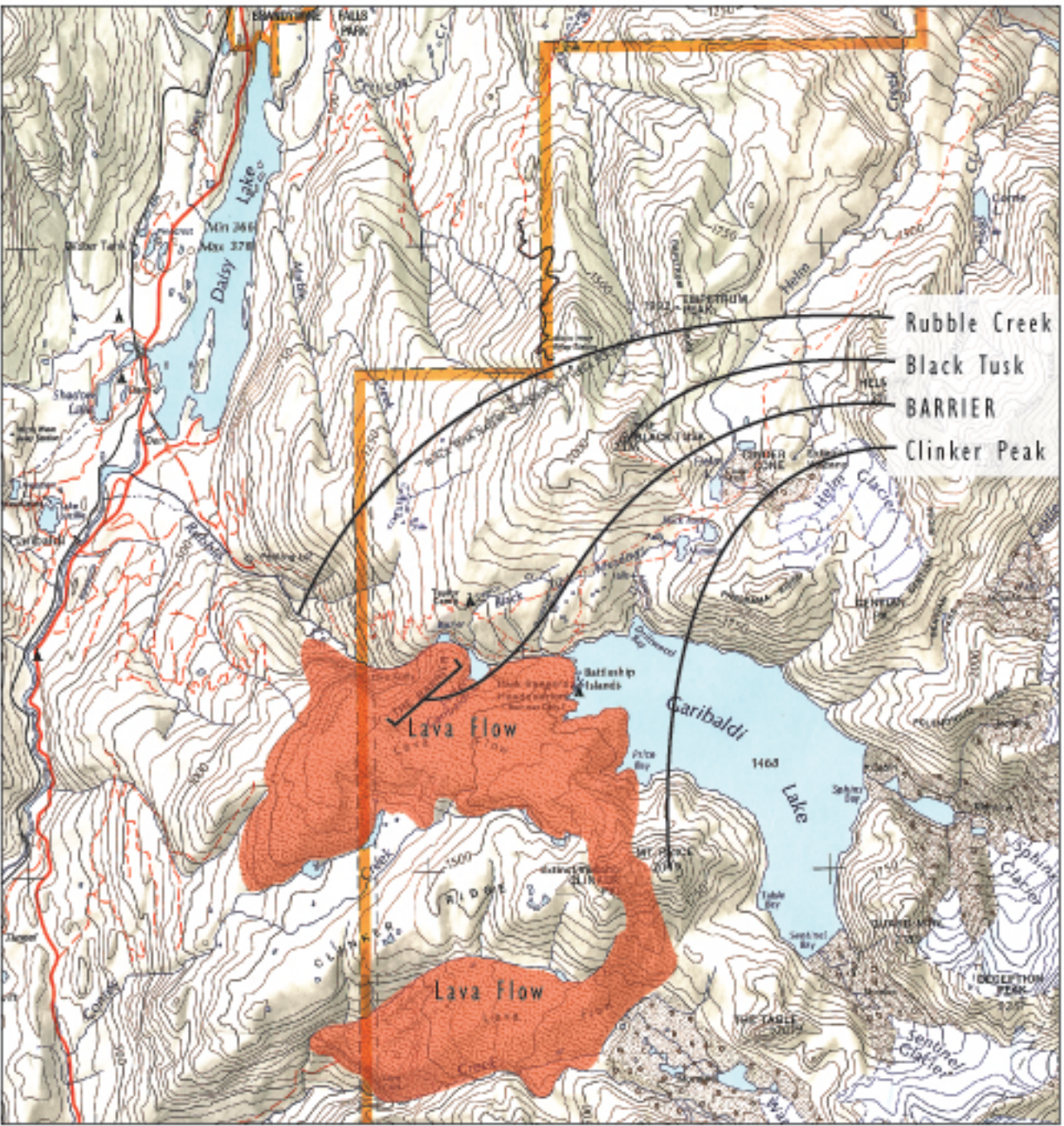


An upgrade and renewal of this site would visually and functionally have a large effect on this busy plaza. With the large number of resort visitors, skiers, boarders, mountain bikers and pedestrians, from all over the world this site and its renewal became very important.



STORY

The Coast mountains are an active mountain belt which continue to rise millimetres each year. Just 20km South of Whistler Village in these Mountains lies the Black Tusk area of Garibaldi Provincial Park. Here we see the dynamic results of conflict from Fire and Ice.



Although parts of these mountains are 2 million years old it was events of 15,000 years ago that shaped what we see today. During the retreat of the last ice age when the volcanoes were alive and as much as 2 km of ice blanketed the land. With its awesome appearance of lava frozen in time, mid-eruption, Black Tusk is perhaps the most enigmatic volcanic feature in the area. Extensive eroding has left only an ancient cinder core exposed.

The mountain's latest volcanic emission came from Price's Clinker Peak, In an event which created the Barrier, a 355m precipitous cliff of lava and rubble and Garibaldi Lake. The lava flowed out and butted against a glacier which forced the drastic chilling of lava as it touched ice. Then as the Glacier receded the cliff of lava remained damming Rubble Creek and forming Garibaldi lakes to the east, leaving the Barrier and Rubble Creek to conspire to the west.

The 'Barrier' cliff in Garibaldi park, visible as you travel the sea to sky highway on route into Whistler, The result of lava flowing into remnant ice age ice.



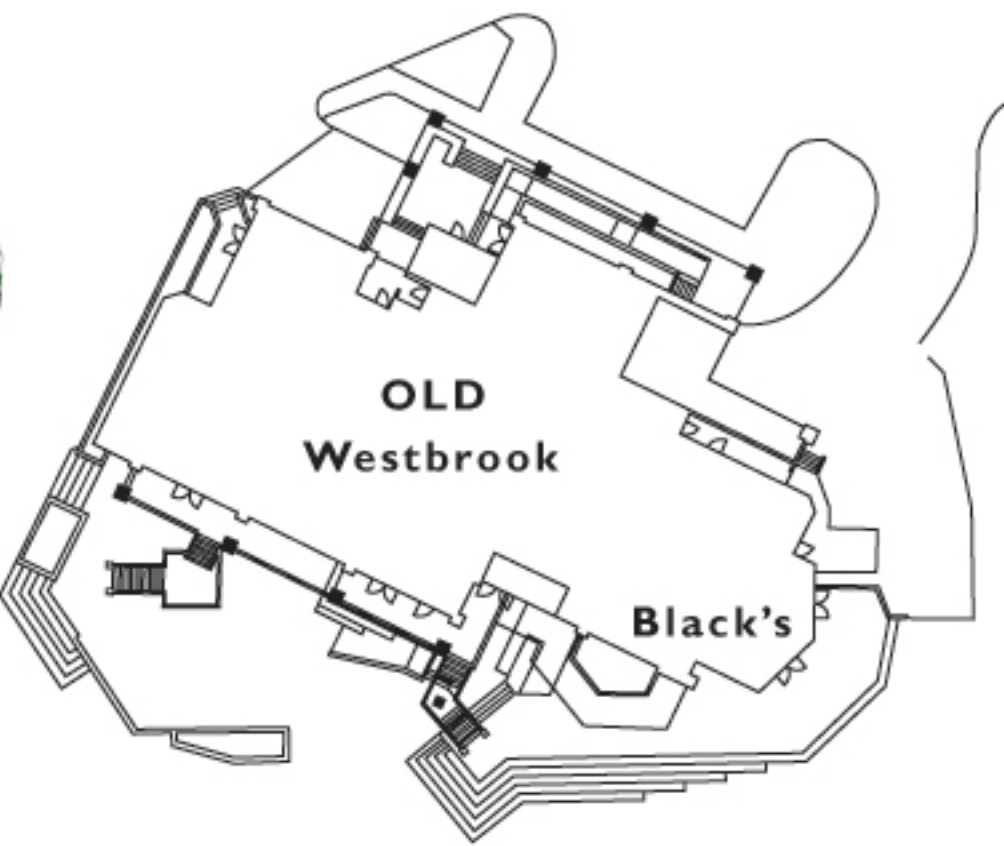
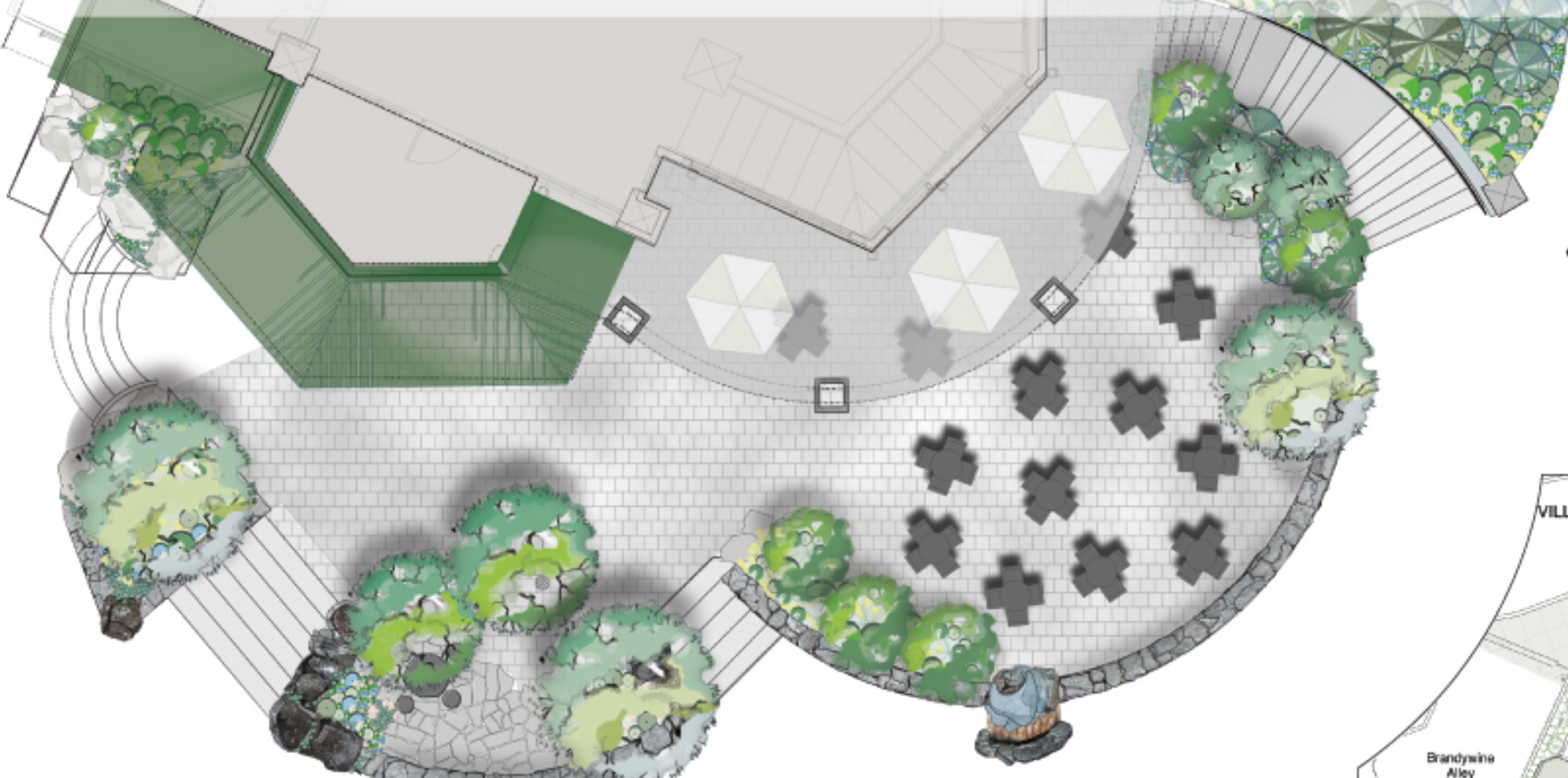
BASALT ROCK Local Material

The crystal shape of hardened lava is basalt, the most common volcanic lava. The Use of local basalt rock; thinking 'Black's,' 'Black Tusk' and 'Basalt' alliterations, plus the colour of the rock to the name of the site would help to tell this story



BLACK'S

The Black's patio included an upper deck and new curved stair access into skier's plaza, which helps bring down the mass of the building. The lower patio containing the artwork, designed to embrace the space bringing people in and through it.



A renovation of the rest of the building and patio was influenced by the Black's patio. The entire building grounds and patio's were renovated by the same design team creating a pleasing and welcoming integration of form and function.



DEAD SPACE

How to make this site special, add meaning & make it unique to the area.

Major renovation to this site hotel and retail property

reconstruction of exterior building envelope

new roof with new overhangs and gables

new upper level balconies

new porte-cochere and hotel entry

new paint scheme

new comprehensive sign plan

redesign dogs building & patio space

new pavers and paving design

retail storefront and arcade improvements

improved outdoor terraces

new exterior stairs for second level retail

comprehensive landscape improvements

incorporating public art

enhanced parkade entrance

addition of stone cladding & heavy timber details

improvements to the service and loading area

Whistler village has adopted an enhancement strategy recognizing that it must continue to stay current, to offer both residents and visitors a unique world class 'Whistler' experience.

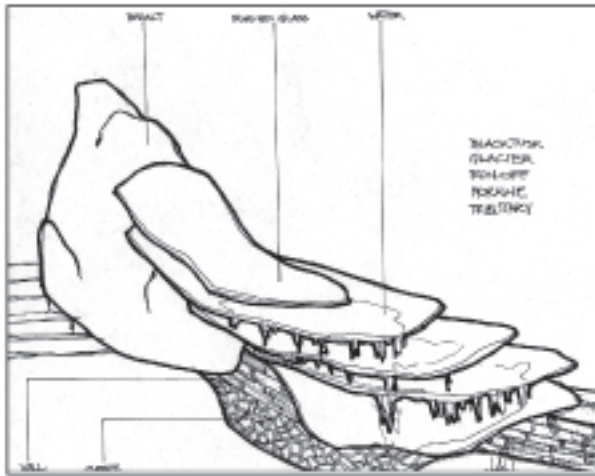
Future enhancements will explore unrealized opportunities in regards to planning, design and development while remaining in harmony with the resort community and striving for sustainability.

It was the intent of the landscape architect and the artist, that the site & patio renovations should respond to the surrounding plaza space while also looking to provide something of real meaning, a story that could be translated into a landscape.

The existing building and patio area was rundown, and presented a cold face of excessive concrete



ROCK & ICE ARTIST COLLABORATION



To bring the story of the 'Barrier' and basalt to Whistler's Skier's Plaza an abstraction of the event is recreated with artist collaboration.

By studying forms and relationships of ice to rock, and working with a glass artist, a special feature artpiece was integrated into the site design. Shaped cast glass representing ice was wrapped around a basalt column representing lava flow. Recirculating water is the ice melting from hot lava ~ an abstraction of events at the 'Barrier.'



The base rock set into the basalt wall is not basalt, it was found on site during construction and used as an anchor for the rest of the basalt and glass forms.

Artist on site working out finer details of artwork, assembly and set up of glass and playing with the water part of the feature.

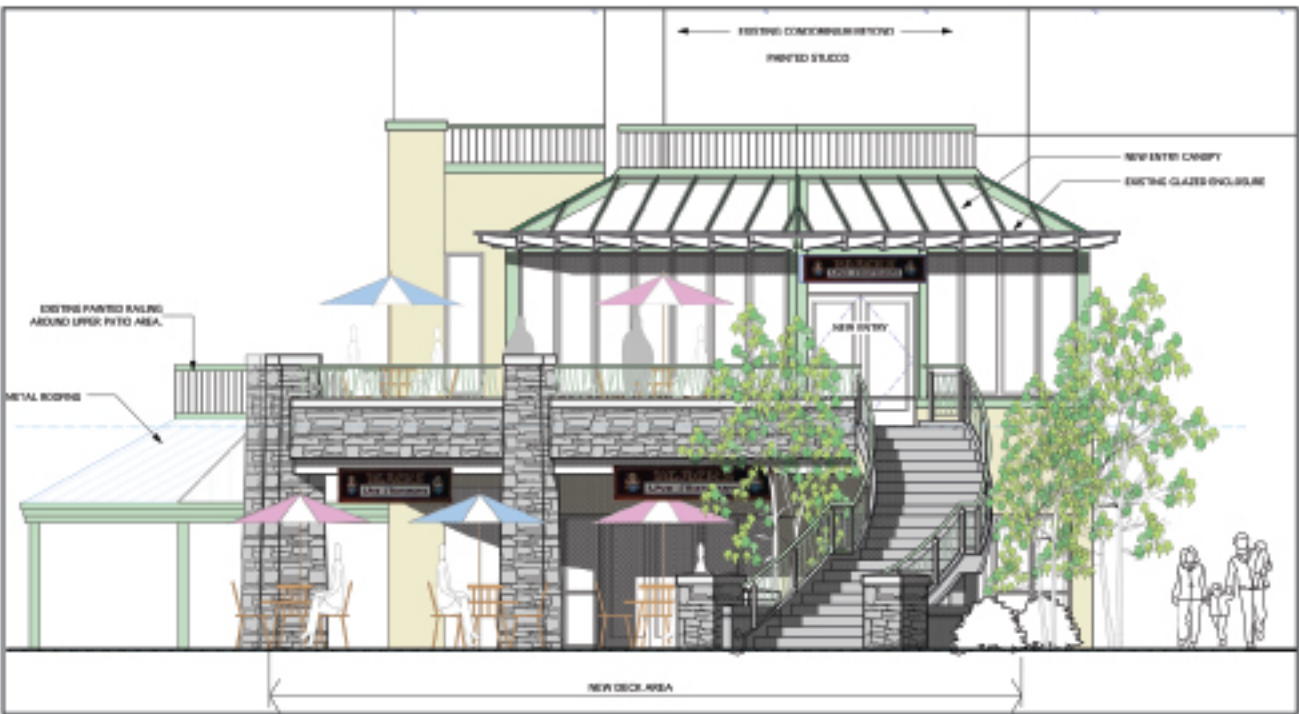
Final Art completed in the fall 2003.



FUNCTION

Upon completion this once dead space was immediately in high use.

The art feature is a continual draw to the site. Out of curiosity one afternoon we counted more than 200 people who stopped to check out the art work, and 60 took photos. The art work integrated into a site tells a story and uses local material. Successful beyond expectation, the art and patio serves to inspire future village projects to engage meaning in the landscape and encourages collaboration with artists.



8605 Driffler Way
Whistler, BC
Canada V8N 1B4
T.604.932.3040
F.604.932.8959
www.tbllco.com

Tom Barratt, BCSLA, CSLA, Tom Barratt Ltd.
Kim Rooney, Tom Barratt Ltd. Lead Designer
Laurelin Fondacaro, Tom Barratt Ltd. Graphic Artist

MURDOCH COMPANY
ARCHITECTURE + PLANNING LTD.

this is it.

ROBERT STUDER

