

OVERVIEW - About The Bid SCOPE OF WORK

2010 Olympic Bid Vision

‘This would be the first Winter Games to be held on the sea, surrounded by mountains with a trip through a magnificent fiord to a world-class ski resort. Vancouver and the compelling setting of our “Sea-to-Sky” Games promises unforgettable experiences for athletes, the Olympic family, spectators, local residents and billions of television viewers.’
-Vancouver 2010 Bid Corporation

Role of the Landscape Architect

The role of the Landscape Architect has been a diverse one and includes the development of facility/venue programs based on the interpretation of I.O.C. and international sport federation guidelines, site selection, participation in theme work groups, coordinating/leading consultant teams, liaising with sport work groups, international sport federations and government agencies in the development of venue plans, overseeing the development of venue budgets, participating in the development of venue fit out plans, legacy plans and bid book content and illustrations.



Vancouver Venue Information

Plans include hosting the ice events, two skiing events, and opening and closing ceremonies in the Vancouver area. Opening ceremonies for both the Olympic Winter Games and Winter Paralympic Games will take place at BC Place in Vancouver.

Whistler Venue Information

The alpine, nordic, sliding and paralympic events are proposed for Whistler. Athletes villages and media centres will be in both locations. Each venue will meet or exceed Olympic and international sport federation standards and will have a plan for post-games use.

COMPETITION VENUES	PROGRAM DEVELOPMENT	SITE ASSESSMENT & SELECTION	DESIGN & DEVELOPMENT Sport Related Venues	OLYMPIC FIT OUT	GRAPHICS Presentation & Bid Book	BUDGET
CROSS COUNTRY	✓	✓	✓	✓	✓	✓
BIATHLON	✓	✓	✓	✓	✓	✓
BOBSLEIGH	✓	✓	✓	✓	✓	✓
LUGE/SKELETON	✓	✓	✓	✓	✓	✓
SKI JUMPING	✓	✓	✓	✓	✓	✓
ALPINE DOWNHILL & SUPER-G				✓	✓	
ALPINE GIANT SLALOM & SLALOM				✓	✓	
PARALYMPIC WHEELCHAIR CURLING		✓		✓	✓	
PARALYMPIC SLEDGE HOCKEY	✓	✓		✓	✓	✓
NON COMPETITION						
ATHLETES VILLAGE • OLYMPIC	✓		✓			✓
• POST OLYMPIC				✓		✓
LOGISTICS / SUPPORT	✓	✓	✓		✓	✓

This table summarizes the areas of responsibility and involvement the project team engaged in.

Responsibilities of Landscape Architect

The Landscape Architect has been responsible for overseeing the development of facility plans and budgets for proposed capital infrastructure associated with the Whistler Sliding Centre, Whistler Athlete's Village, Whistler nordic Centre, and Paralympic Sledge Hockey Facility who's value is estimated in excess of \$200 million (CDN).

Also, the Landscape Architect has played a key role in the development of detailed plans for the Whistler Nordic Centre including cross country, biathlon, ski jumping, nordic combined as well as the development of snow based venue plans illustrated in sports federation documents and the Bid Book.

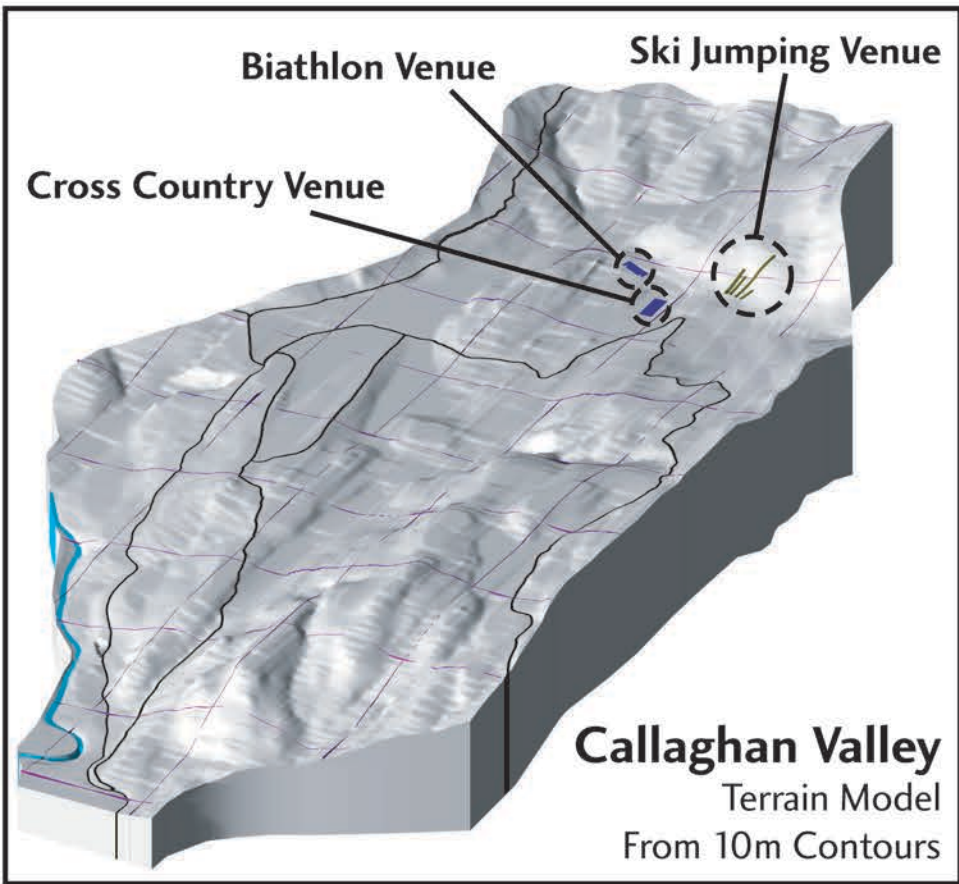
2010 Bid Book

The Vancouver 2010 Bid Book is Canada's response to the I.O.C.'s request for details on how countries and bid cities intend to host the Games. It is one of the tools the I.O.C. will use to evaluate Candidate Cities.

The Vancouver 2010 Bid Book is a 460 page, three volume set that covers 18 themes and answers 200 questions posed by the I.O.C. The Bid Book covers a variety of topics including plans for sport venues, olympic villages, accommodation, security, medical and health services, media facilities, technology, transportation and culture.

Whistler Nordic Centre - Site Introduction

An accurate 3D terrain model served to provide clear illustration of the terrain and the relationship of proposed competition venues to each other. This model can be rendered from any view to illustrate different sun angles.



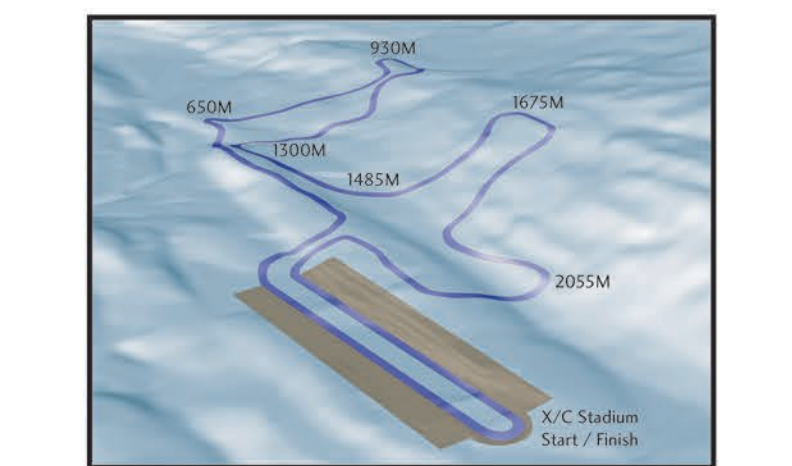
CROSS COUNTRY & BIATHLON

Cross Country Ski & Biathlon Venues

The Cross country and Biathlon competition venues are strategically located on a plateau overlooked by glaciers and mountains.

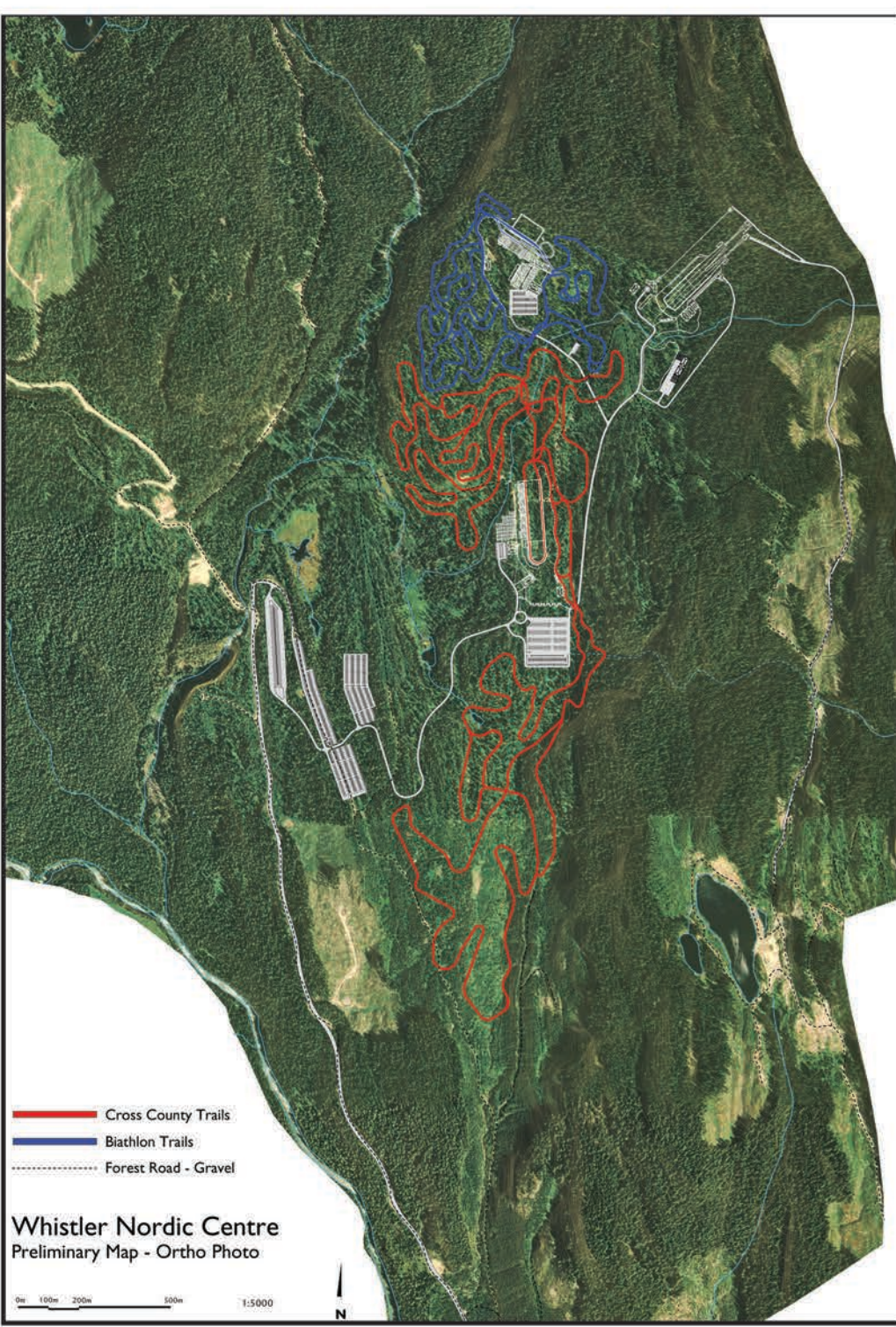
The viability of the Whistler Nordic Centre is largely driven by the cross country and biathlon trails and stadium layout requirements dictated by the international sports federations. The site must accommodate all the nordic events within proximate distance requirements and range of elevation changes.

Continual site reconnaissance and ground truthing with sports representatives coupled with slope analysis, environmental conditions and digitally derived profiles were means used to prove out the trails and suitability of the site.



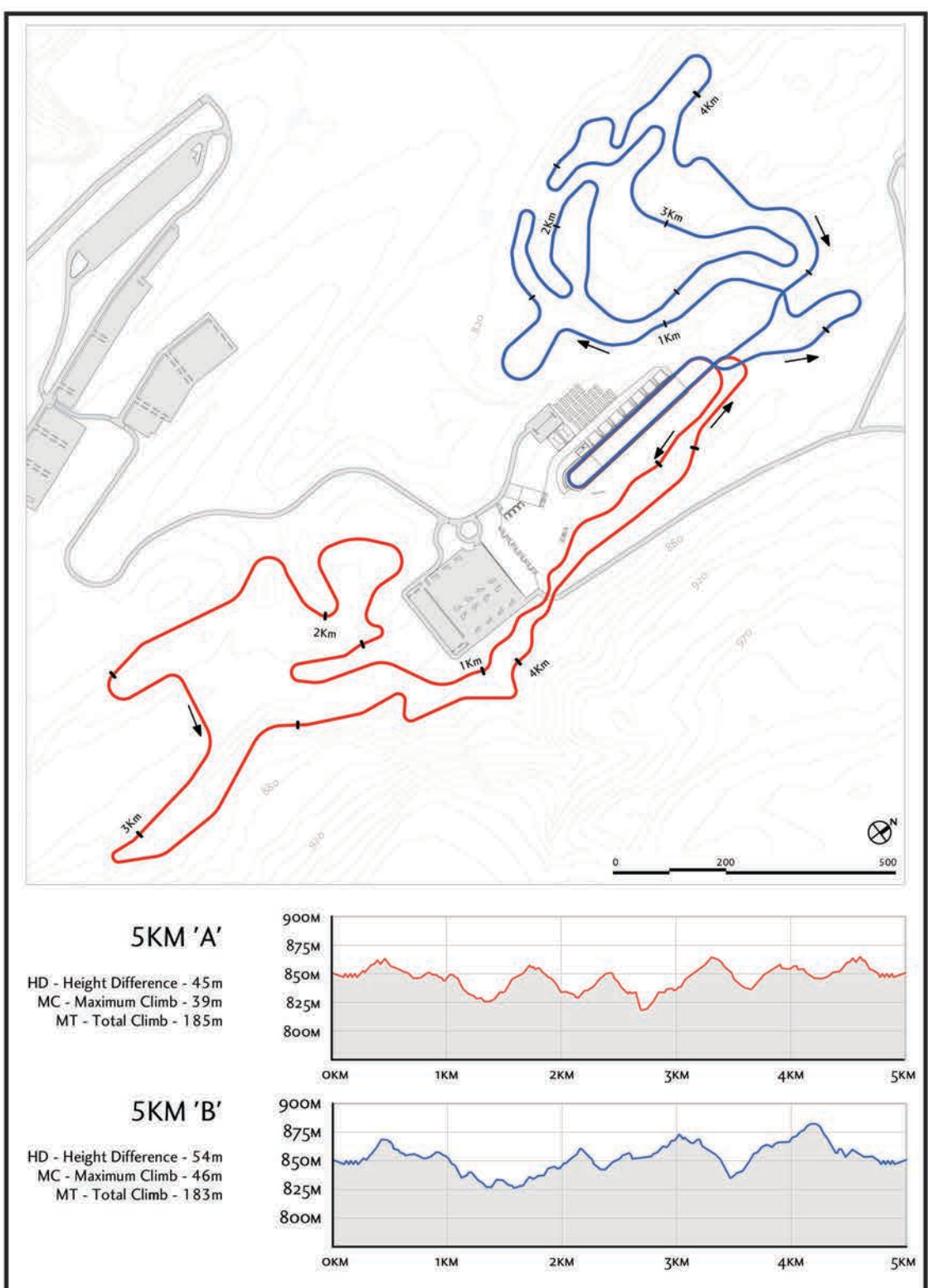
Stadium and 2.5Km Trail

Terrain modeling of proposed trails provides necessary information for homologation process. Rendered solar aspect will assist in determining final trail location and help in predicting snow conditions and maintenance implications.



Whistler Nordic Centre - Site Plan

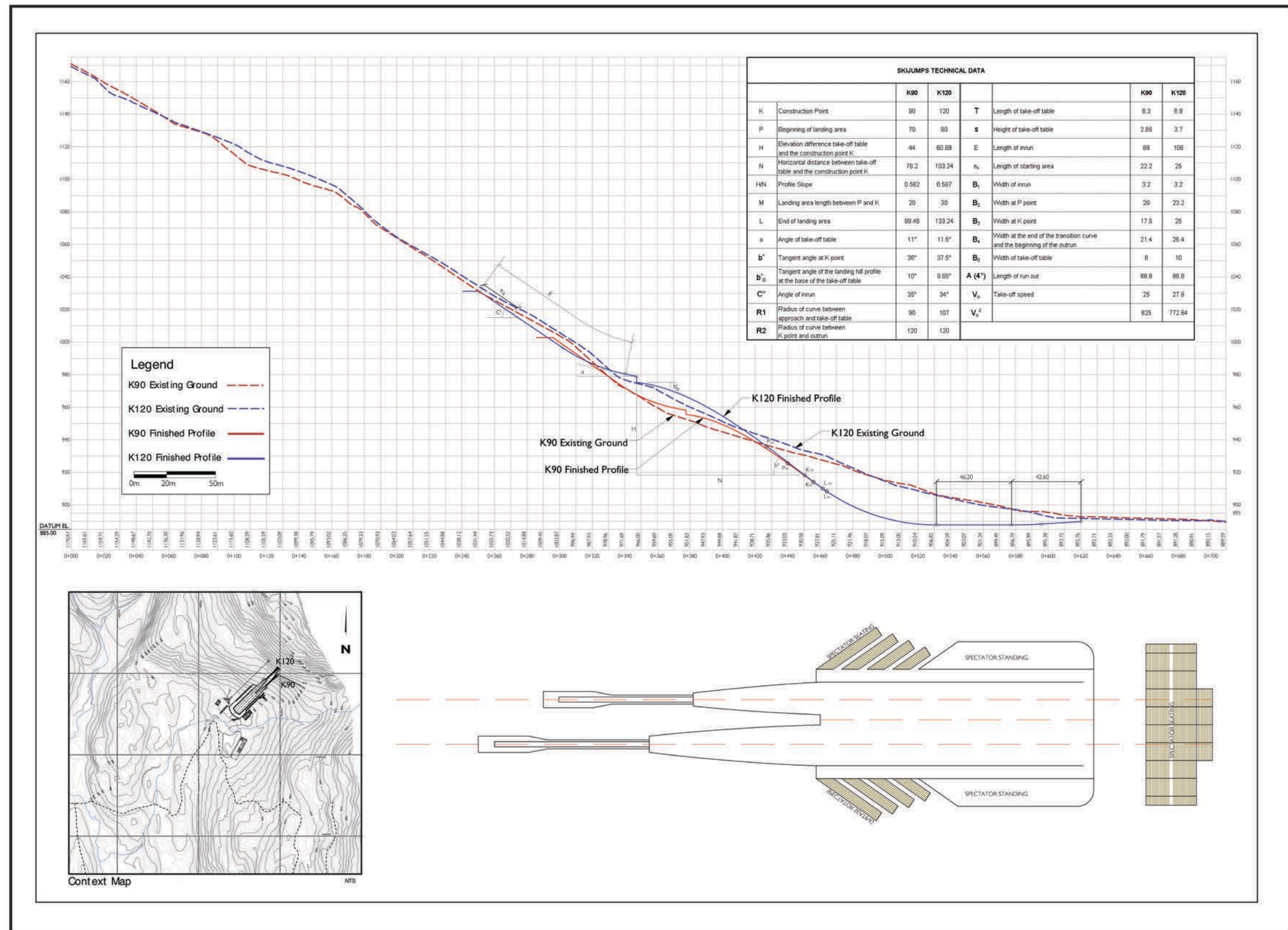
Digitally accurate Callaghan Valley ortho photo showing cross country trails, biathlon trails, venues, logging history and forest conditions.



Trail Profiles - Sport Technical Plans

Developed for all proposed cross country and biathlon trails. Derived digitally and rendered for publication.

SKI JUMPING



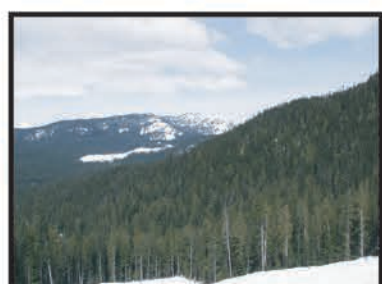
Ski Jump Profile - K90 & K120

Ski Jumping

Site Selection and Sports Requirement Interpretation.

Using custom software developed specifically for analysis of ski jumps, several slopes in the area were analyzed to find the optimum slope with the least cut and fill requirements.

The profiles show the proposed jump profiles and technical data in relation to the data existing grades.

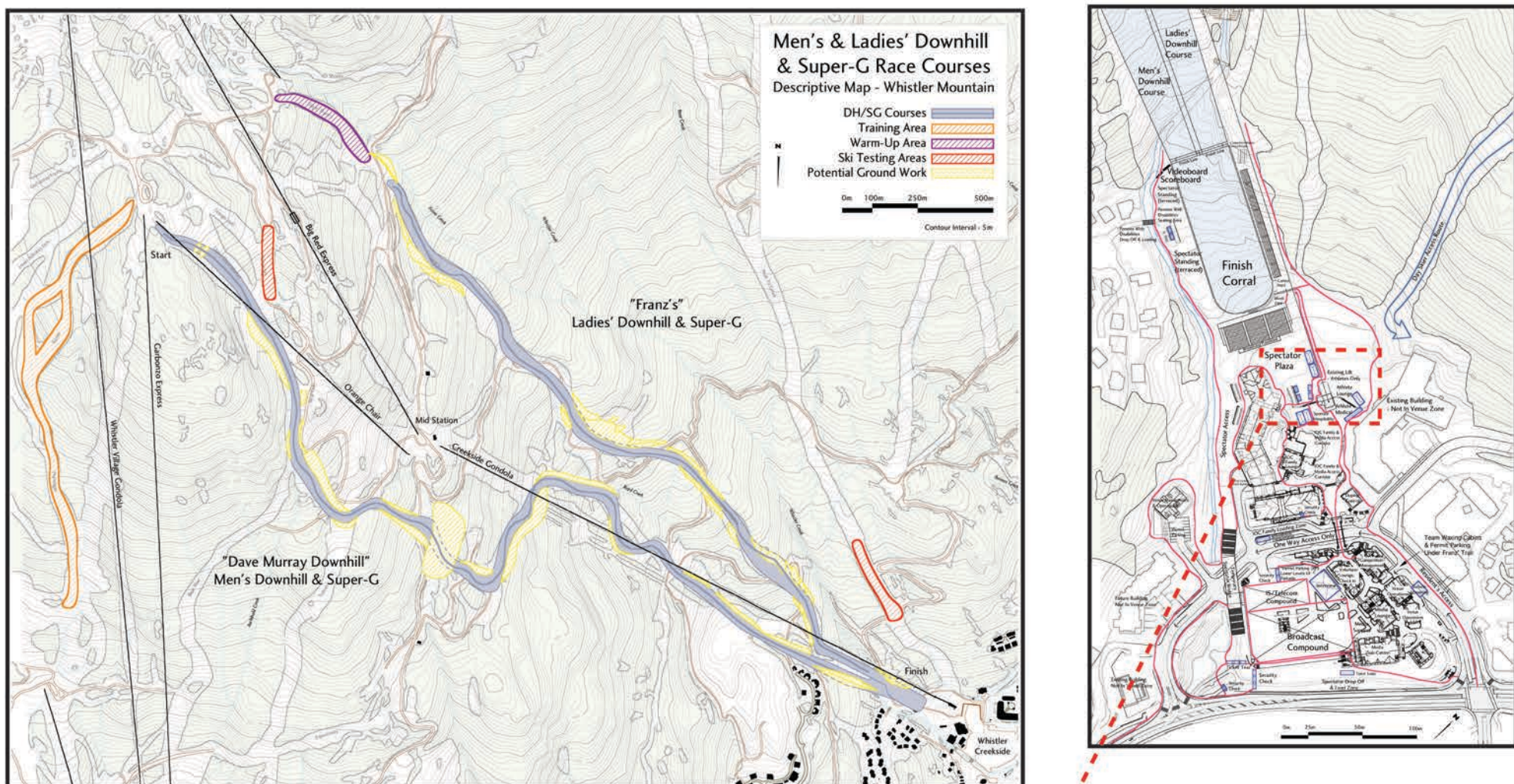


Ski Jump Area

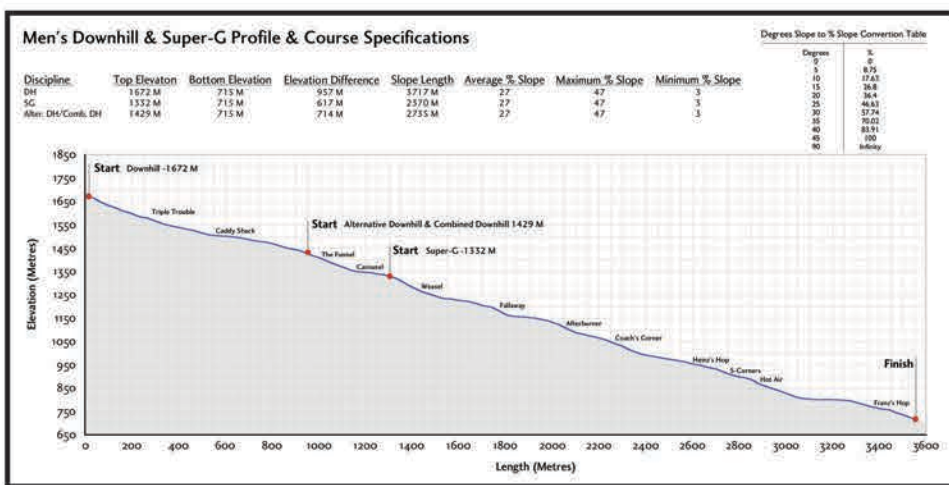


Site View from Biathlon Stadium

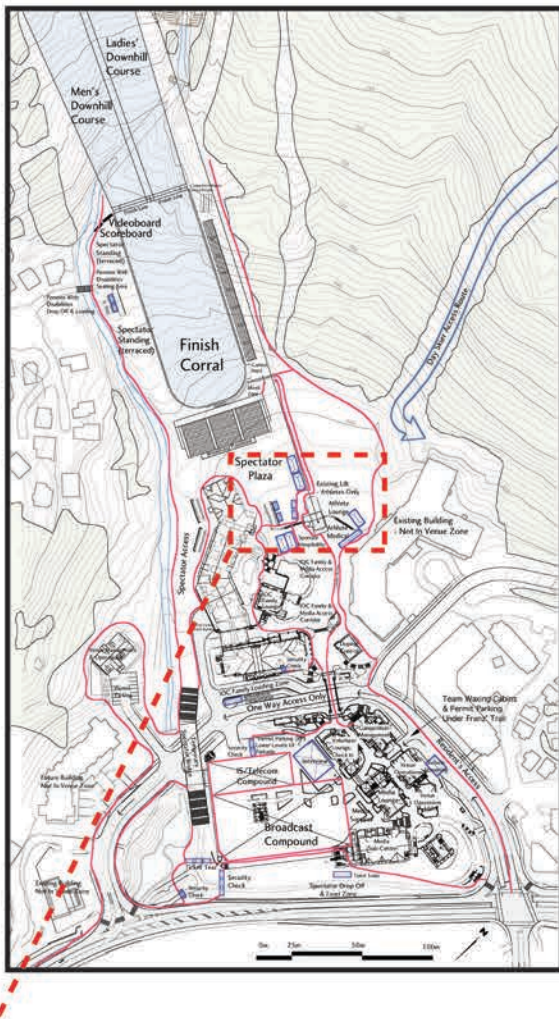
F.I.S. - BID BOOK - Sport Technical



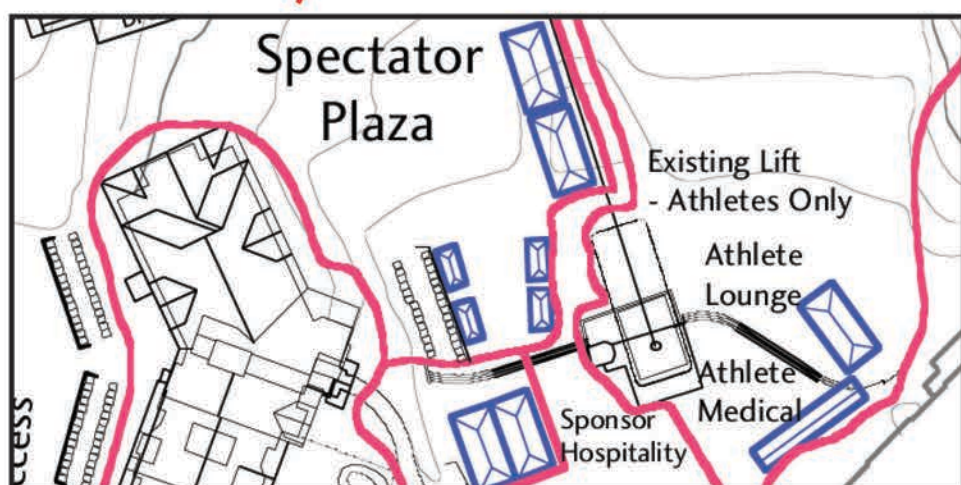
Men's & Ladies' Downhill & Super-G Race Courses



Men's Downhill & Super-G Profile



Whistler Creek Fit Out - Functional Area Plan



Whistler Creek Fit Out - Inset

F.I.S. & Bid Book - International Sports Federations Review

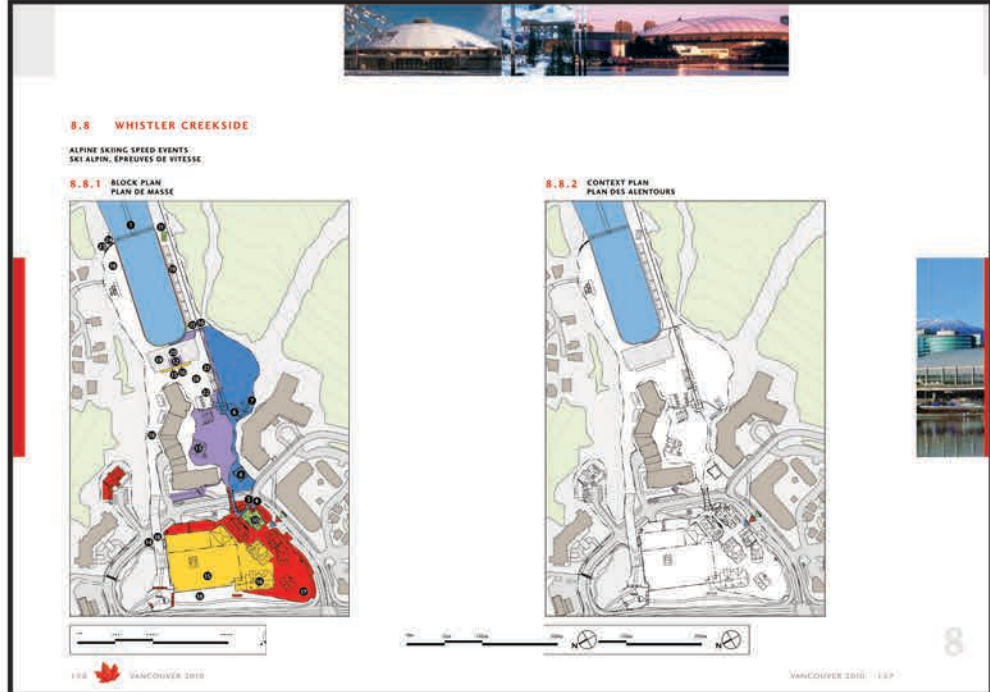
FIS - The International Ski Federation - Federation Internationale de Ski

'Sport Technical Plans' were developed for each venue for review by the different sport federation groups. Technical representatives of each sport group reviewed the initial draft of the technical plans. All comments and suggestions were incorporated into the plans.

The detailed sport technical plans provided the basis for simplified graphic illustration plans in the bid book.

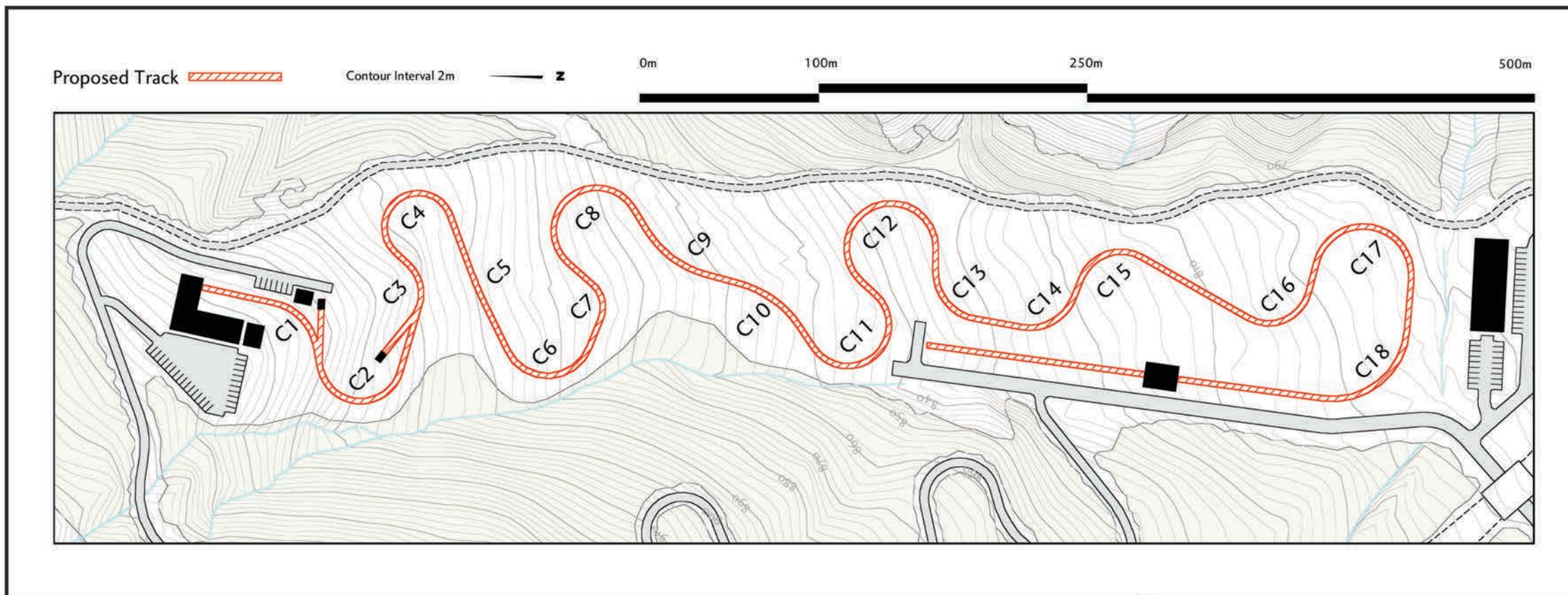
I.O.C. Bid requirements include technical venue plans showing each functional area as well as venue cluster and venue context plans - all to strict specification.

I.O.C. - International Olympic Committee

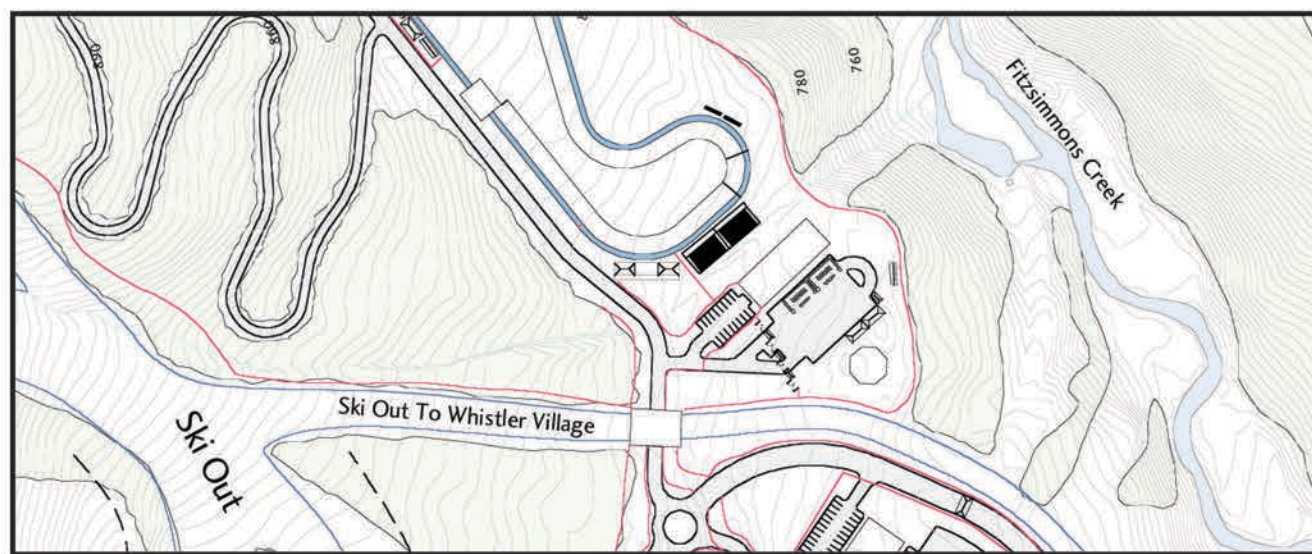


Bid Book 2 Theme 8 - Whistler Creekside

F.I.S. - BID BOOK & Sliding Centre



Whistler Sliding Centre - Blackcomb Base II - Bobsleigh, Luge, Skeleton - Track Design



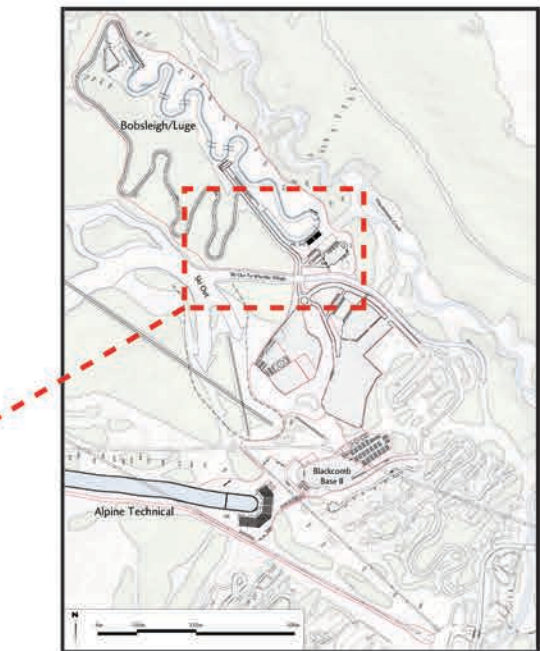
Blackcomb Base II Fit Out - Inset

Blackcomb Mountain Base II

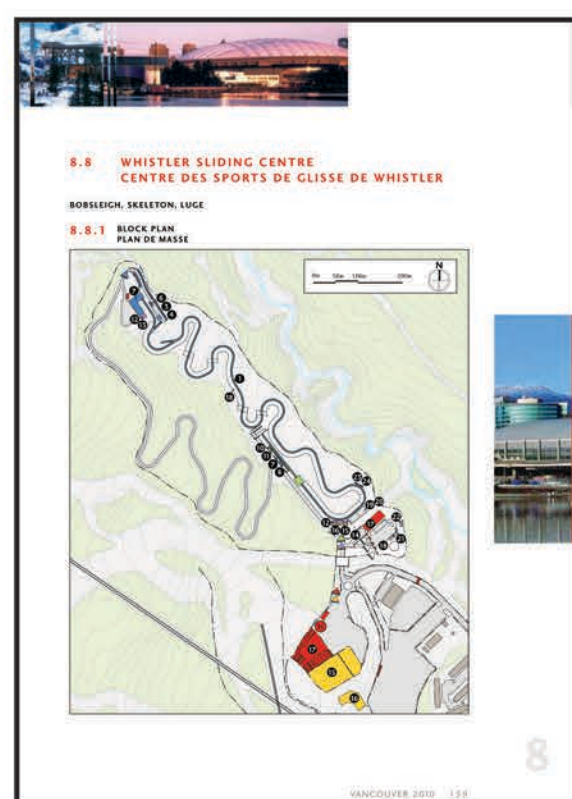
Blackcomb Mountain Base II area will set the stage for both the alpine technical events Slalom and Giant Slalom as well as the sliding sports of Bobsleigh, Luge and Skeleton.

Combining competition venues creates logistical challenges while offering efficiencies with regard to venue fit-out.

The Whistler Sliding Centre, estimated construction cost of \$55 million, is situated in close proximity to Whistler Village to maximize its legacy potential.



Blackcomb Base II Fit Out Functional Area Plan



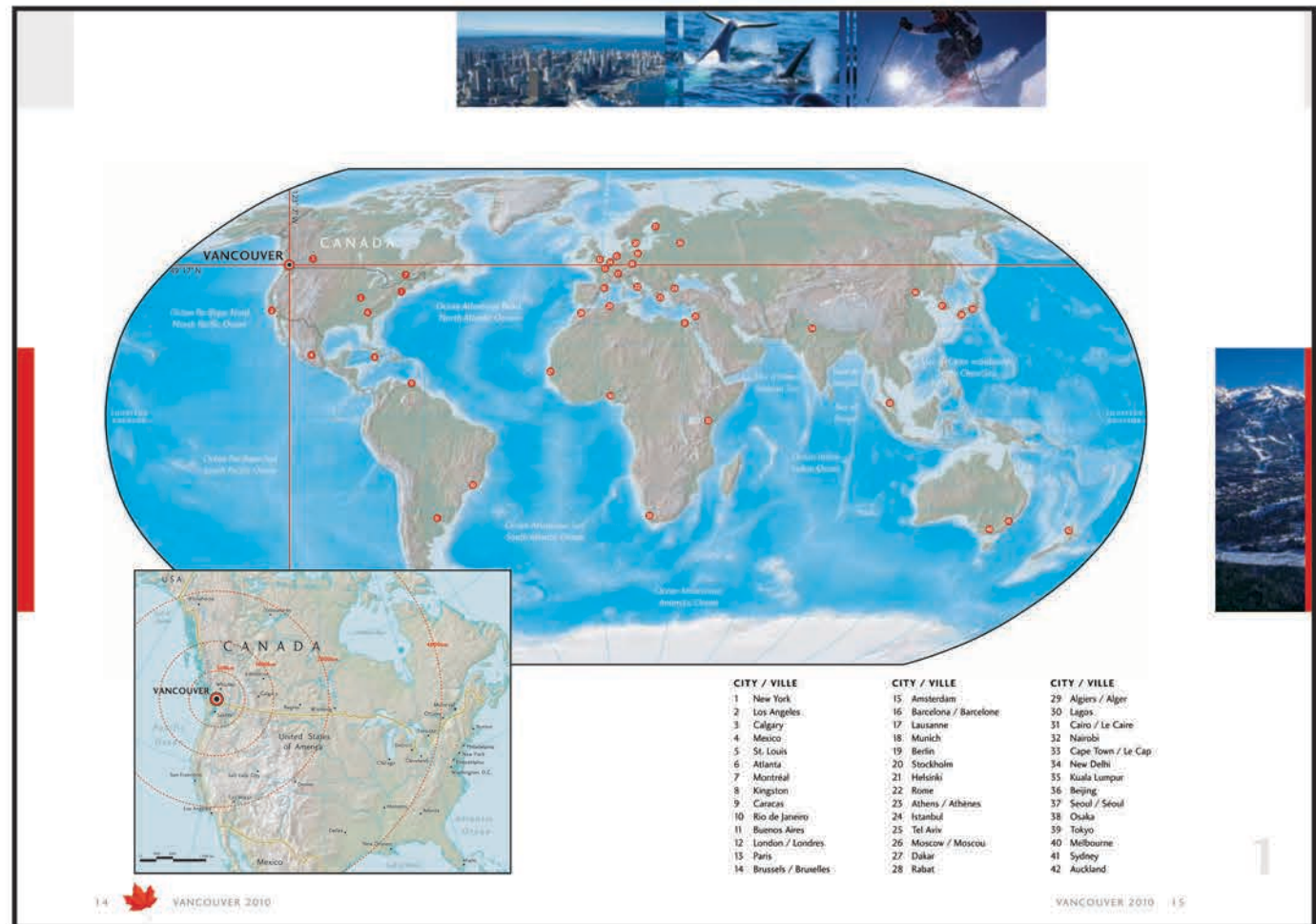
Bid Book 2 Theme 8 - Base II

THE BID BOOK

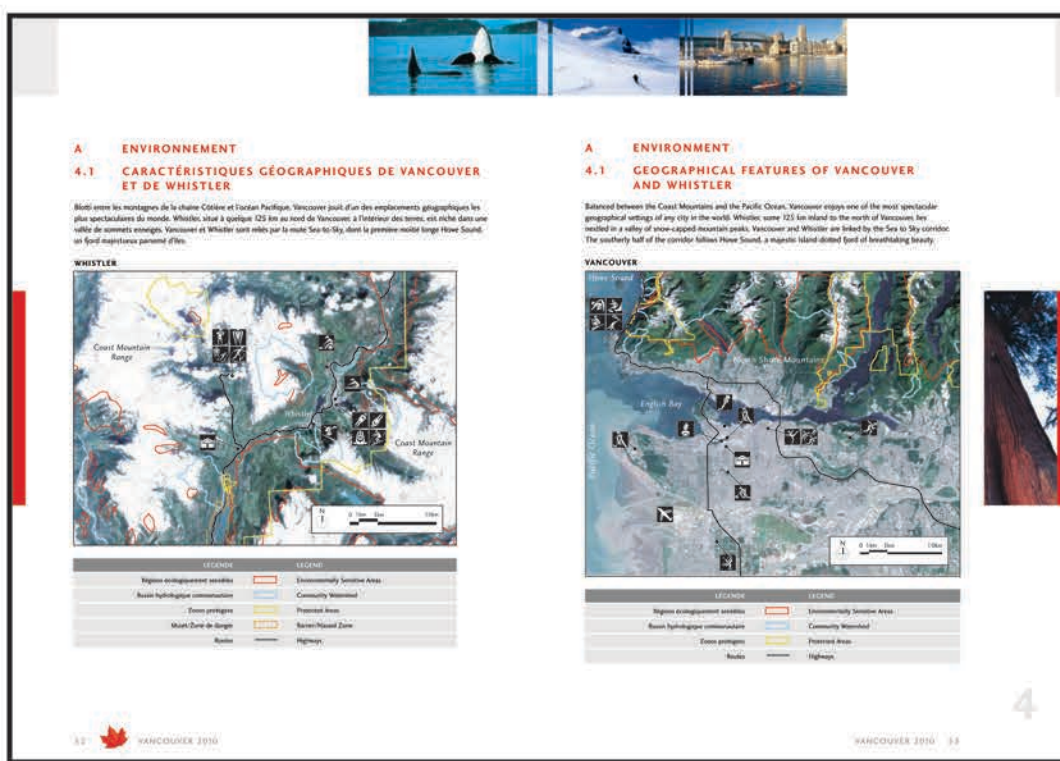
The 2010 Bid Book

The Bid Book is the most critical document in the endeavour to procure the Olympic Games. The project team worked with the Vancouver 2010 Bid Corporation creative team and was responsible for all location, environment, transportation, accommodation and snow sport venue plans.

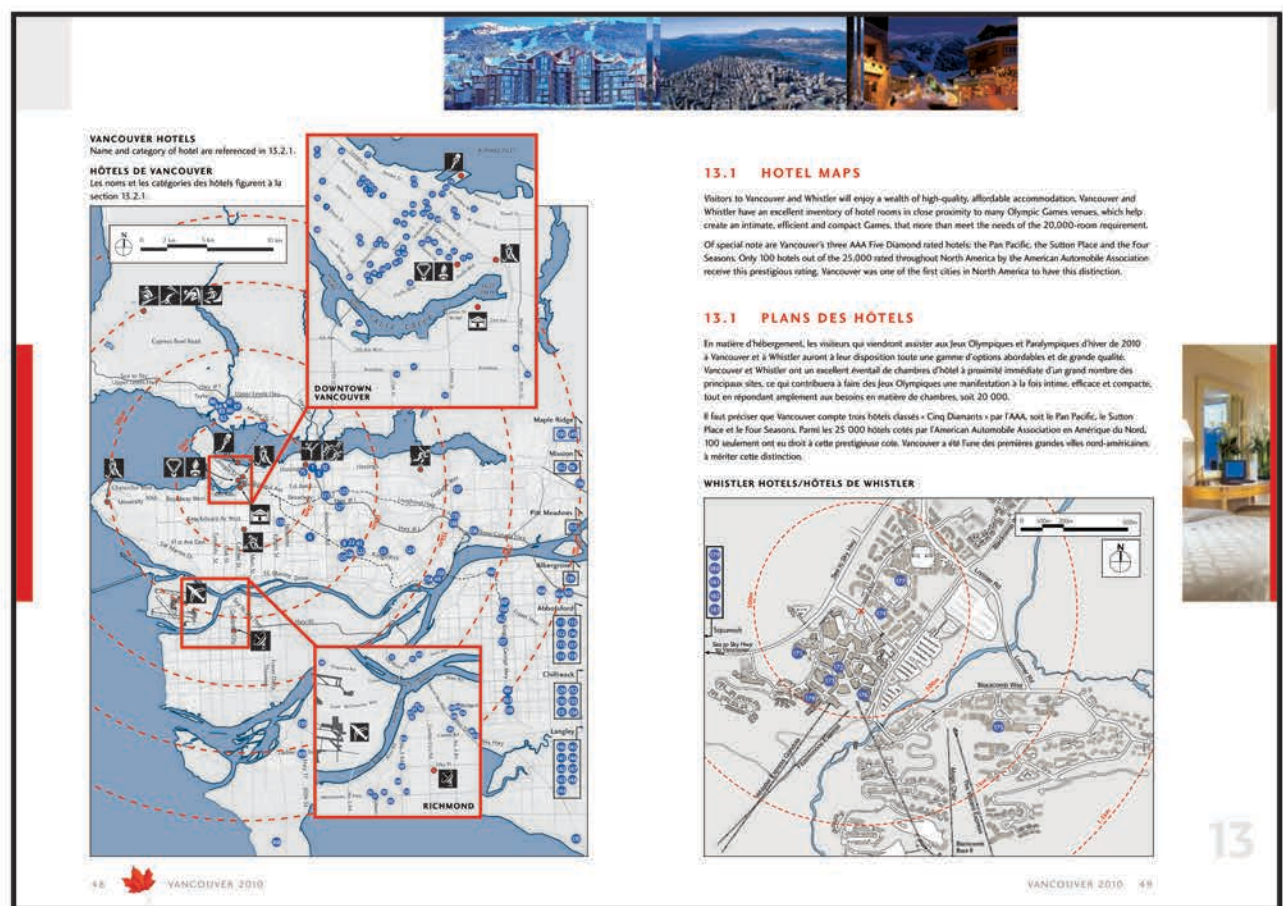
The integration of the three pillars of the modern Olympic movement, Sport, Culture and Environment are incorporated in all aspects of the Olympic Plan. A cornerstone of the Bid is the integration of a sustainability framework providing policy guidance and a set of best practices based on principles of ecological limits, interdependence, long-term view, stakeholder engagement, equity, accessibility and healthy communities.



Bid Book 1 Theme 1 - World Map



Bid Book 1 Theme 4 - Protected Areas

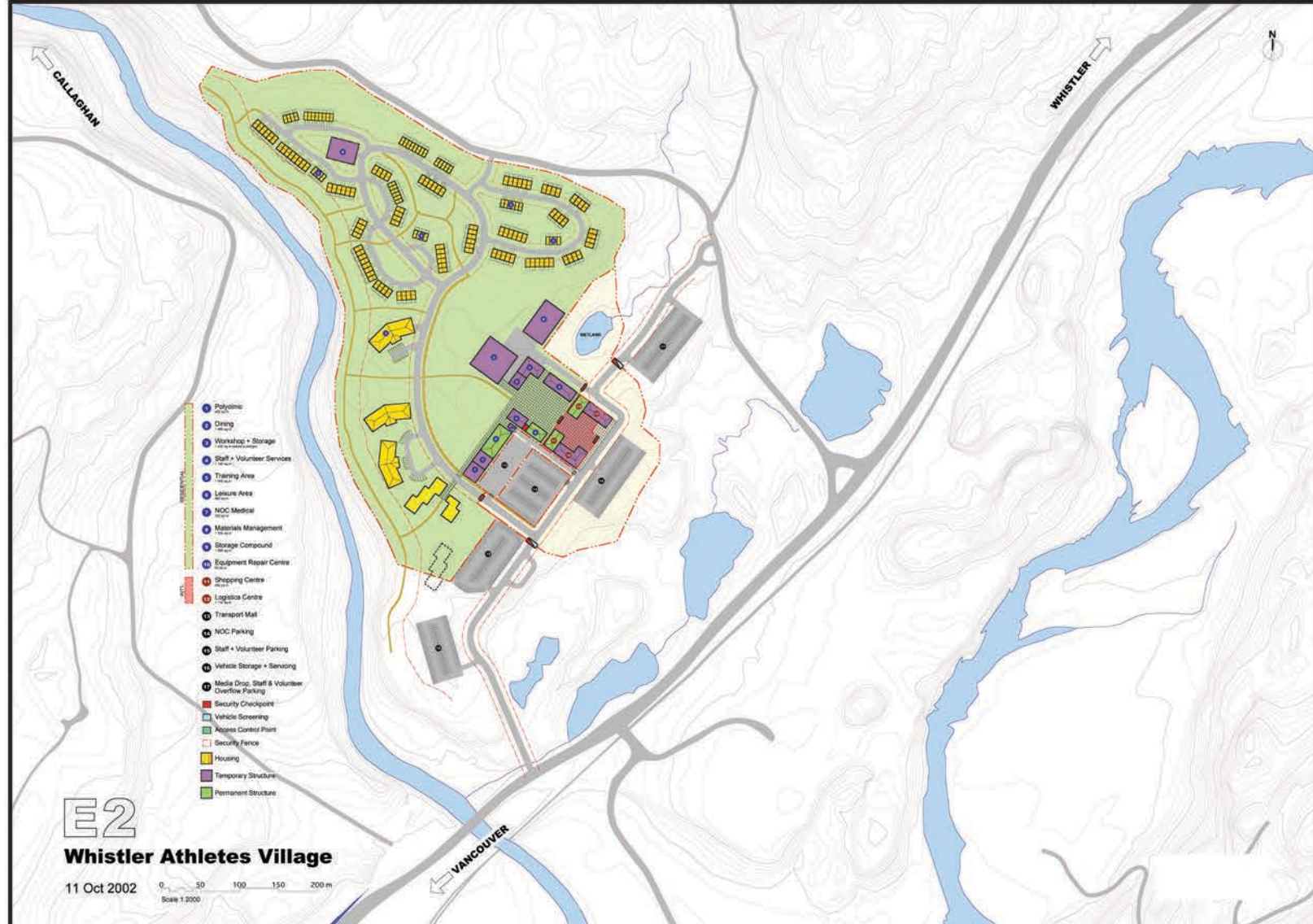


Bid Book 3 Theme 13 - Accommodation Map

OLYMPIC VILLAGE

Whistler Olympic Village

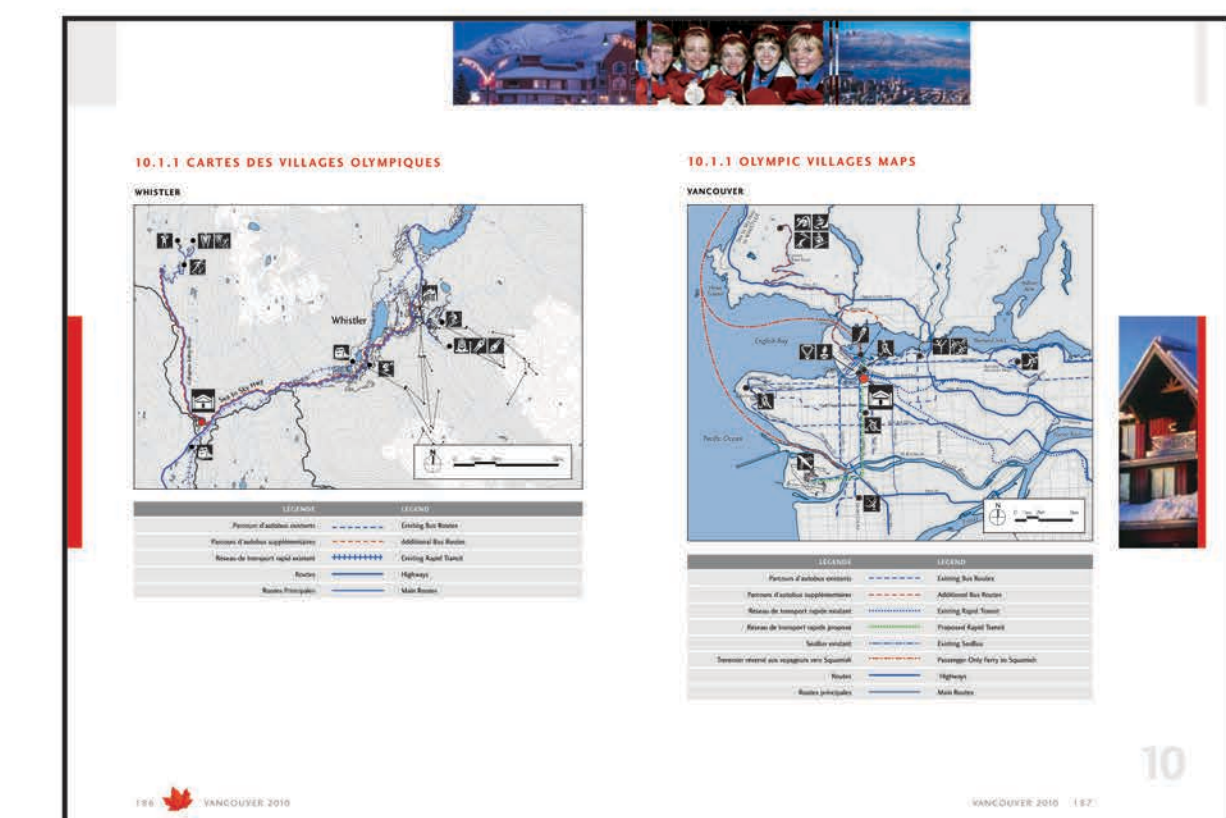
To ensure it's success as a legacy, the Athlete Village was designed as a community offering a variety of housing forms and integration of Olympic temporary uses which could easily be converted to fulfill post Olympic community needs. In essence, the Village design reflects a small community design that meets the Olympic and Paralympic needs for a brief period of time. The village may be expanded to absorb community growth. The Village will be designed to attain a minimum Leeds Certification of Silver through the incorporation of innovative "green building" technologies and progressive approaches to site development.



Whistler Athlete Village Site



Post Olympic Development



Bid Book 3 Theme 13 - Olympic Village Locations

THE FINAL PRODUCT

